

Fonte: SEPLAMA/PMC - PLANO DIRETOR DE CAMPINAS, 2006.

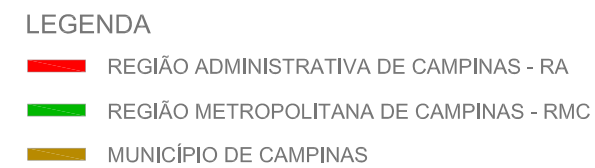
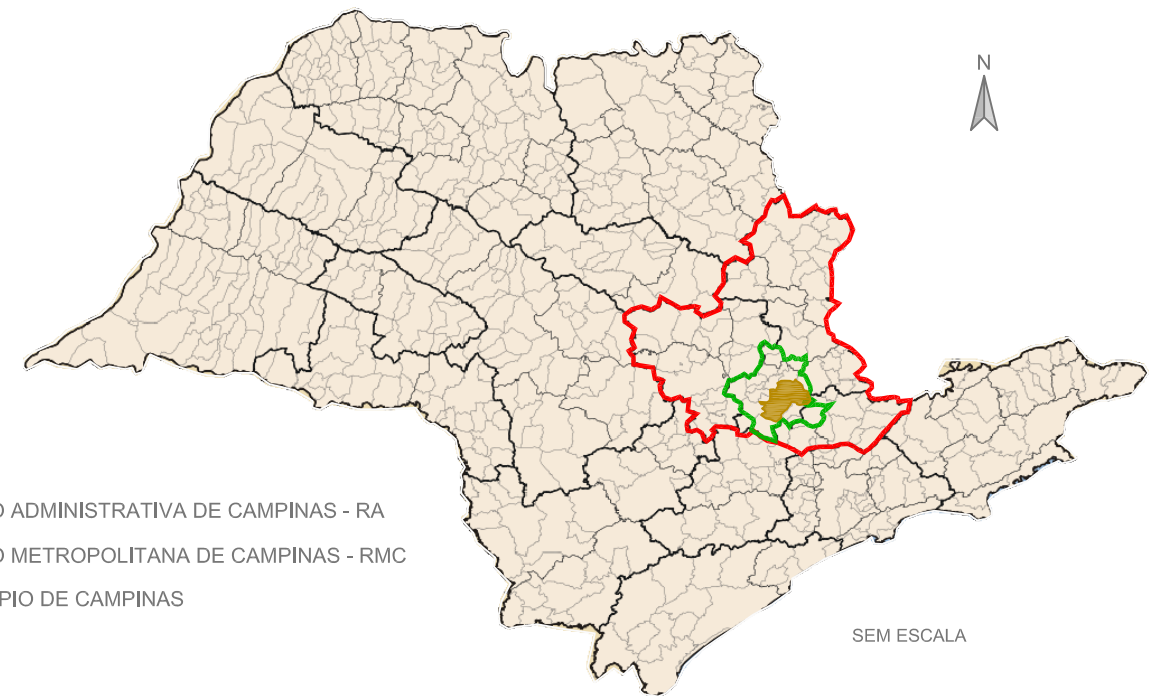
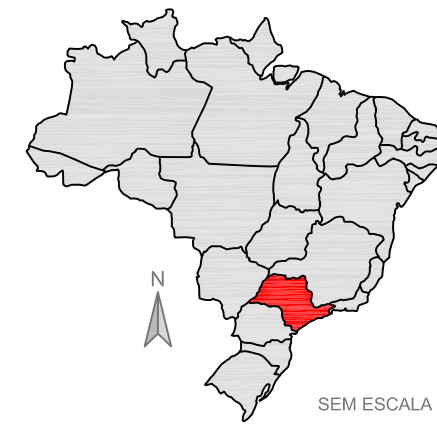
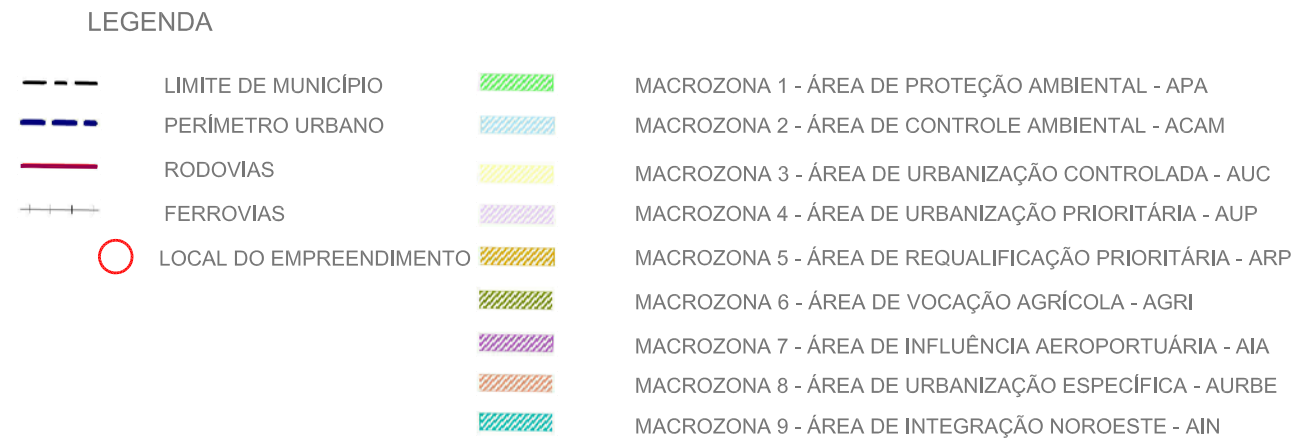


Figura 1

AGO/2010

MAPA DE LOCALIZAÇÃO DE CAMPINAS

RIMA - PLANO URBANÍSTICO GLEBA A2

ESCALA
INDICADA

Av. Albino José Barbosa de Oliveira 918, sala 1
Barão Geraldo, Campinas, SP, 13.084-008
tel/fax 19.3249.1187
consultoria@estudioambiental.com.br

estudi ambiental